

# MONTHLY MEMBERSHIP PROGRESS REPORT

District 28 T

Results as of: 5/31/2020

GMT:

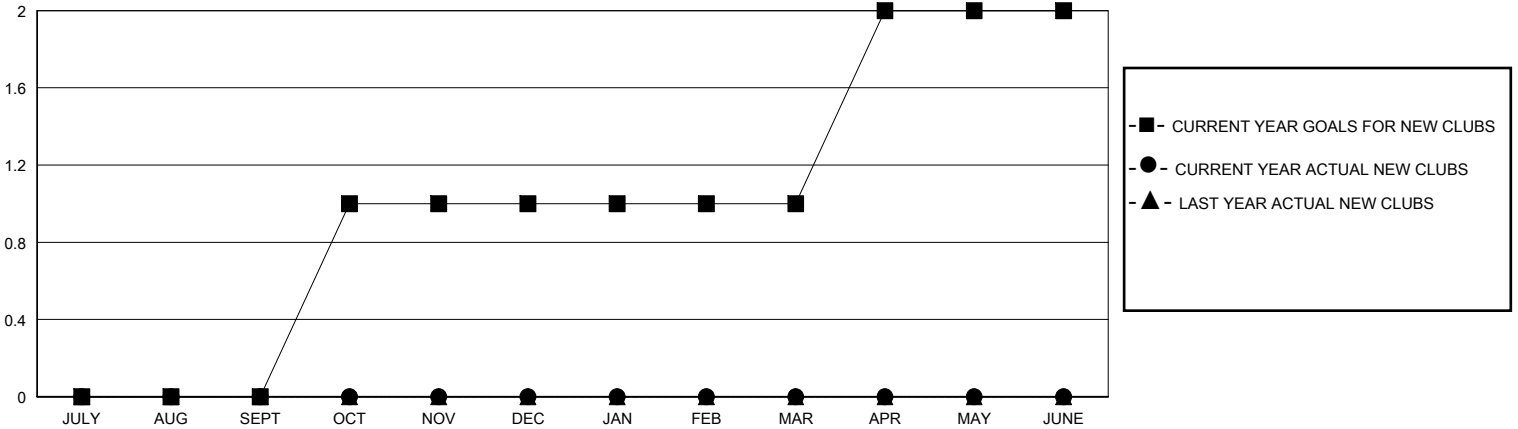
LOCATION UTAH

GMT CA

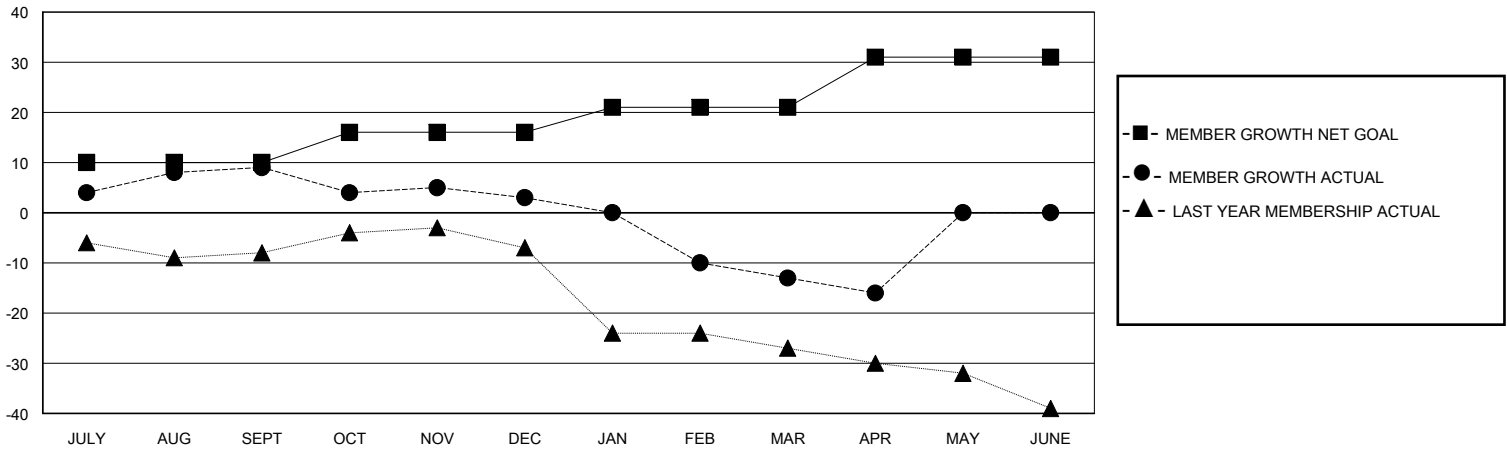
| Clubs                 |               |           |               |
|-----------------------|---------------|-----------|---------------|
| RESULTS FOR 2019-2020 |               |           |               |
| QUARTER               | NEW CLUB GOAL | NEW CLUBS | DROPPED CLUBS |
| JULY/AUG/SEPT         | 0             | 0         | 0             |
| OCT/NOV/DEC           | 1             | 0         | 0             |
| JAN/FEB/MAR           | 0             | 0         | 0             |
| APR/MAY/JUNE          | 1             | 0         | 0             |

| Members               |                        |                      |  |
|-----------------------|------------------------|----------------------|--|
| RESULTS FOR 2019-2020 |                        |                      |  |
| QUARTER               | MEMBER GROWTH NET GOAL | MEMBER GROWTH ACTUAL | DROPPED MEMBERS ACTUAL (including transfers) |
| JULY/AUG/SEPT         | 10                     | 19                   | 9  |
| OCT/NOV/DEC           | 6                      | 9                    | 15   |
| JAN/FEB/MAR           | 5                      | 9                    | 25   |
| APR/MAY/JUNE          | 10                     | 0                    | 3  |

GOALS AND ACTUAL NEW CLUBS CUMULATIVE



GOALS AND ACTUAL MEMBERS CUMULATIVE



|  |   |  |
|--|---|--|
| DROPPED CLUBS: 0   | 12 CLUBS OF 26 ADDED 1 OR MORE NEW MEMBERS                | <b>GENDER DISTRIBUTION</b><br>MALE 388 (67.60%)<br>FEMALE 186 (32.40%) |
| <b>DROPPED MEMBERS</b><br>DECEASED 5<br>CLUB CANCELLED 0<br>OTHER 47<br>TOTAL 52 | <a href="#">CLICK HERE FOR CUMULATIVE MEMBERSHIP DATA</a> | TOTAL FAMILY UNIT MEMBERS 200<br>FAMILY MEMBERS PAYING HALF DUES 101   |